



Water Boards

Things I Think You Should Know About Salt Management in the Santa Ana Region

Kurt Berchtold

November 17, 2016



Santa Ana Region

- History of irrigated agriculture
- Rapid population growth
- Use of imported water
- Interconnected watershed
- Adverse salt balance



Background

- Current plan adopted in 2004
- Not our first plan
- Developed with active stakeholder participation



Background

- Groundwater Management Zones
- Objectives based on historic ambient quality: 1954 -1973
- Recalculation of ambient quality as a 20-year average every three years



Maximum Benefit

- Use of 68-16 to develop “maximum benefit” programs
- Based on the benefits of providing for increased recycled water use
- Specific commitments by participating agencies



Updates of Plan

- Maximum benefit revisions (additions and modifications)
- Monitoring program changes
- Waste Load Allocation revision
- Ongoing stakeholder involvement



Water Boards

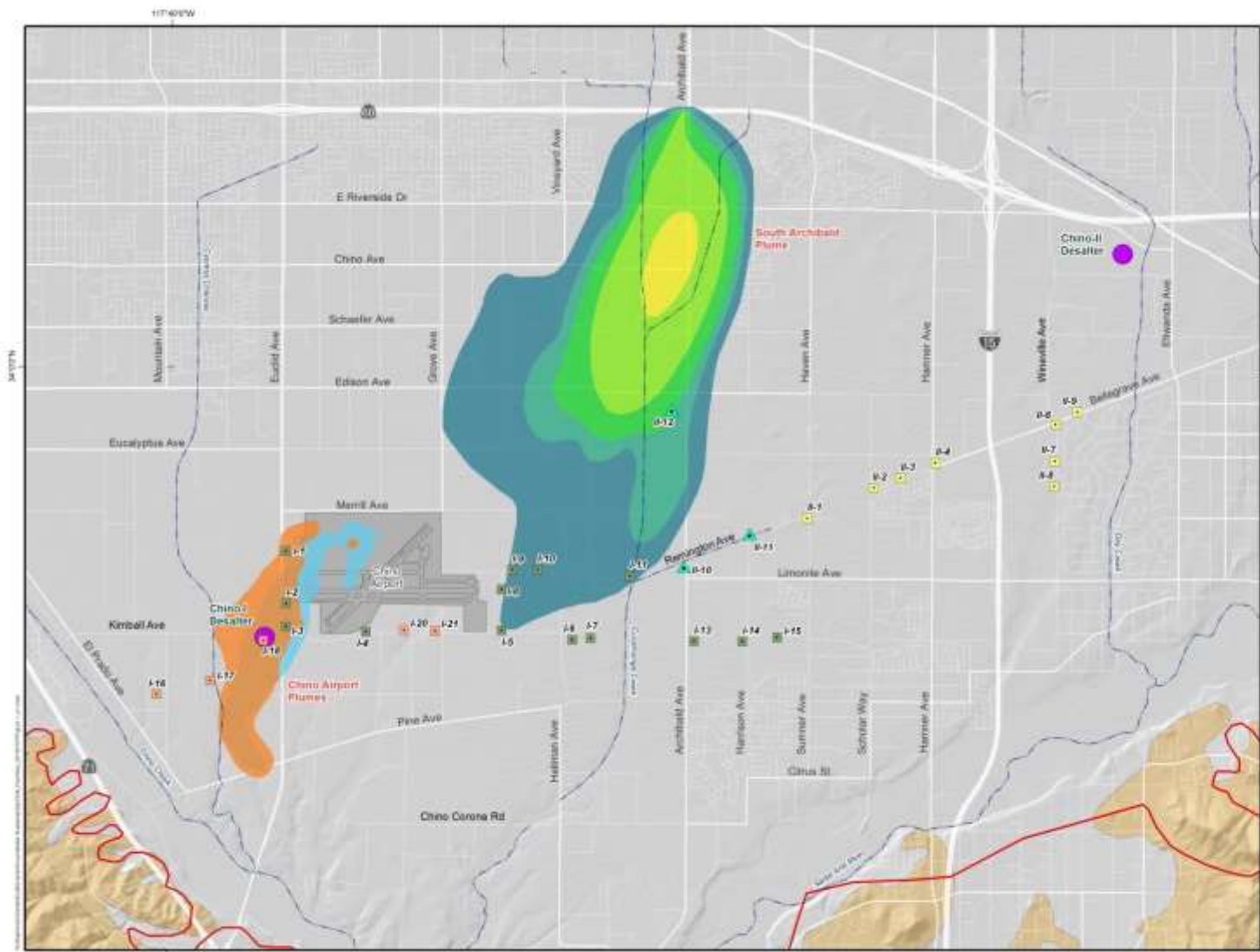
Other Ongoing Work

- Triennial ambient quality update
- Report reviews
- Stakeholder meetings
- Enforcement
- Salt Coordinator

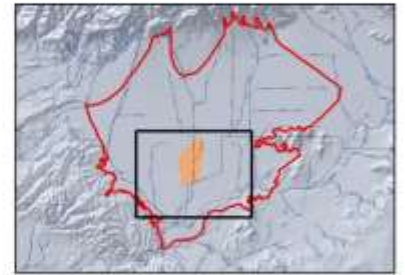


Future Issues

- Waste Load Allocation revision
- Drought impacts
 - Triennial review
 - Averaging periods



- South Archibald Plume
TCE Concentration ($\mu\text{g/L}$)**
- > 0 to \leq 5
 - > 5 to \leq 10
 - > 10 to \leq 20
 - > 20 to \leq 50
 - > 50 to \leq 100
- Chino Airport 1,2,3-TCP Plume at 0.5 $\mu\text{g/L}$ Isoconcentration
 - Chino Airport TCE Plume at 5 $\mu\text{g/L}$ Isoconcentration
 - Desalter Treatment Facility
- Existing Desalter Wells**
- Chino-I Desalter Well
 - Chino-II Desalter Well
 - Chino Creek Desalter Well
- Expansion Wells**
- Chino-II Expansion Well
- Chino Basin DWR Bulletin 118 Boundary
 - Streams & Flood Control Channels
- Water-Bearing Sediments**
- Quaternary Alluvium
- Consolidated Bedrock**
- Undifferentiated Pre-Tertiary to Early Pleistocene Igneous, Metamorphic, and Sedimentary Rocks



Chino Desalter Well Field and Surrounding Plumes

Figure 1



Author: GAR
Date: 7/22/2010

